

Detention Centre Vordernberg Vordernberg, Austria

Sue Architekten ZT GmbH

Name: Detention Centre Vordernberg

Date: 2015

Program: Prison

Photographer: Hertha Hurnaus

Location: Vordernberg, Austria

INFO

Situated in a beautiful wooded valley in the heart of Styria, Austria's central province, the village of Vordernberg has been faced with a steady outflow of people for years following

the decline of the iron and steel industry on which it used to thrive. Therefore, the people of Vordernberg voted in favour of the erection of a pre-deportation detention centre in the village. In return the Federal Ministry of the Interior promised to create new jobs.

We decided to work on this project because it is our belief that places like this, where unresolved social issues of our time are negotiated, are of central importance. The issues in question here are: How does Europe deal with migration? How does distribution work? Who gets the chance to share in our prosperity? Architecture alone will not be able to resolve these questions, of course. In view of the tough answers currently given by the European Union we think it is particularly important to accommodate the people concerned – the so-called "illegals" – in a way that allows them to maintain their dignity during the period of time when the state takes over responsibility for them. Concepts of punishment or degradation have no place here at all.

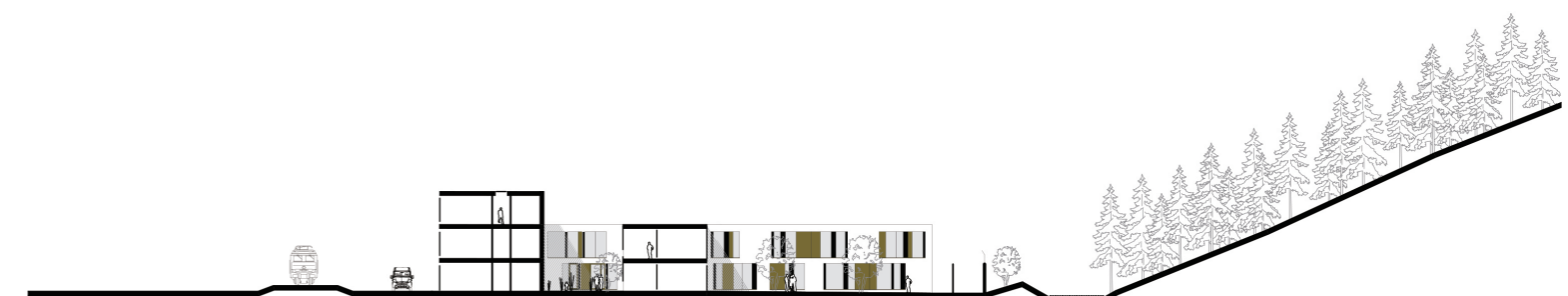
Creative space is there to be interpreted and used. The precise specifications issued by the Ministry of the Interior left some creative space, and we saw it as our duty to interpret and use it as best as possible based on the views outlined above. The prudent representatives of the Bundesimmobiliengesellschaft (the company managing Austrian publicly owned real estate) and of the Ministry would often question our suggestions but in the end we had their full support. This good cooperation with our client regardless of any ideological differences allowed us to pursue an approach that has set new standards for the accommodation of people in police detention centres as well as in prisons.



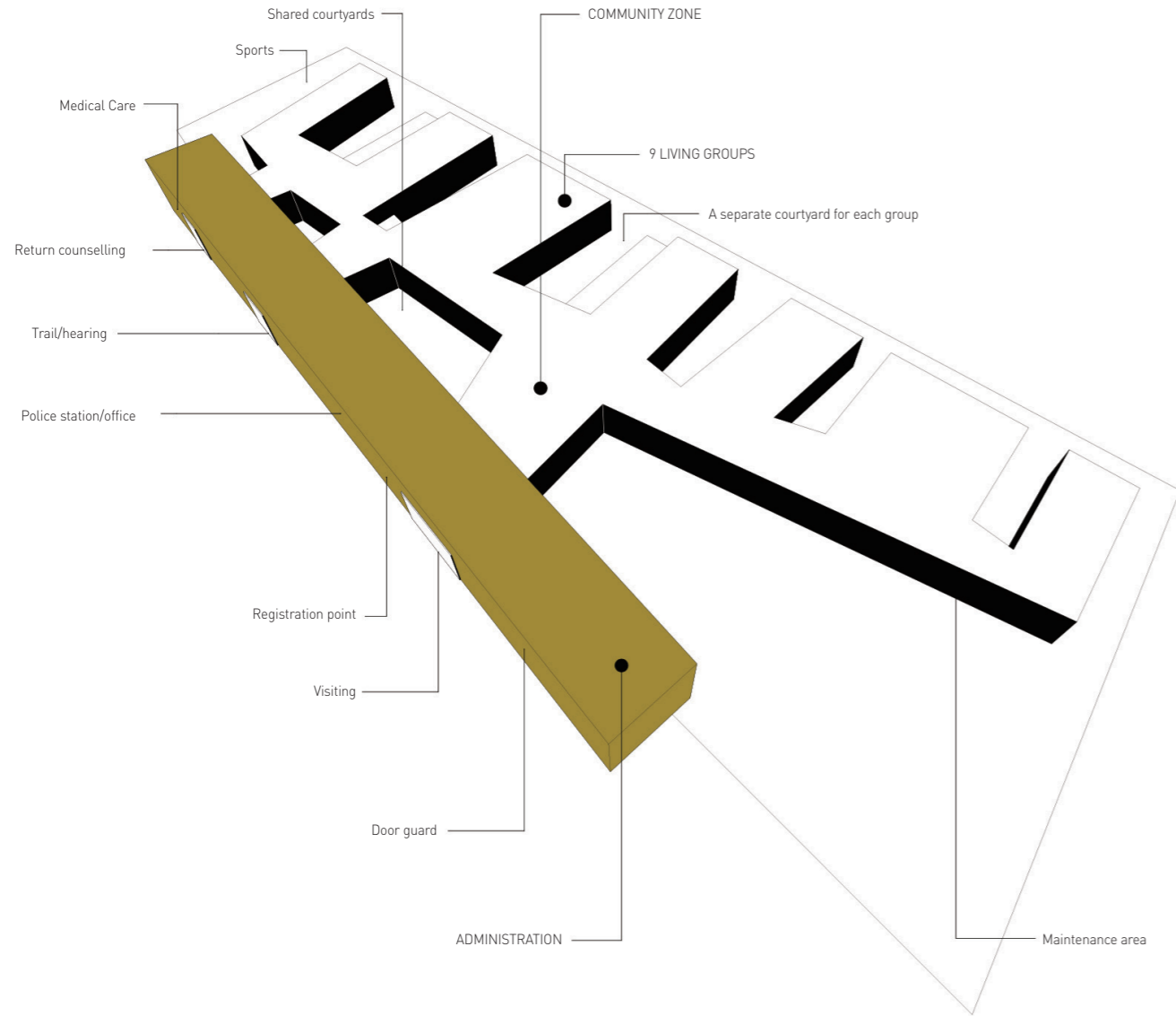
SITE PLAN



ELEVATION



PROGRAM DIAGRAM



FLOOR PLAN





The co-director architects Hyoungnam Lim and Eunjoo Roh believe that the architect's role is to pay attention to the voice of the residents and the earth and to mediate an agreement between the two. They have been running studio_GAON since 1998. The term "Ga-on" takes its meaning from the 'Pure-Korean' language, which can be deciphered to 'the centre' and 'the serenity of home'. With this meaning behind the title of their studio, Lim and Roh devote their practice to merge the comfort, the nature and humanness together in a living space of a home.

Gaon's project include the designing of House in Gumsan, Lucia's Garden, Sinjinnal Building, the House of Respect and Happiness, the Unforgettable, Mise en Abyme, the Serious Request project (RedCross), projects for youth facility (Unicef), Bukchon-gil and Gyedong-gil Trail Project

Lim and Roh have also been writing a series of news article column in 'Chosun' and 'Segye' Newspaper and have published 10 books, such as "WHAT WOULD THEY HAVE DREAMT OF IN THE HOUSE", "THE HOUSE THAT SAVES PEOPLE", "THE HOUSE THAT GROWS LIKE A TREE", "SMALL HOUSE, BIG THOUGHTS", "BUILDING HOUSES WITH STORIES", "SEOUL, LANDSCAPE ALBUM".

- 4**
- 0033 Yoojeongheon
- 0098 Blooming House with wild flowers
- 5**
- 0366 Choco Luce
- 0672 The Boa Constrictor in the Children's Grand Park
- 6**
- 0858 Dance House for Teenagers



Sue (Sehnsucht und Entdeckungsreise = longing and journey of discovery) or The ever-new beginning at zero

The Vienna office Sue Architects was founded in 2006. Yet, it is not a young firm from the U.S. that is hidden behind the spectacular name, but the credo "strategy and development". "It always starts with a strategic plan," Christian Ambos, Mi chael Anhammer and Harald Höller say. "Once the strategy is established, we are developing the actual concept." Is there a particular style that is representative of Sue? The unani mous answer follows immediately: "Hopefully not!" What is much more important for the three architects, all born in the early seventies, is the detection and winking out of longings, the dialogue with the clients, the ever-new beginning at zero.

"Every project is unique. Depending on the topic a building can be colourful and cheerful, or modest and austere. This is a matter of common journey of discovery between client and architect." The realisations of recent years include residen tial buildings and single-family houses, restaurants, shops, district offices and also a detention and deportation center. Many of the projects were chosen through open competitions. "The jobs are very varied, but exactly therein we see the ap peal of our profession. Every day is different, every day new challenges are waiting for us."

Wojciech Czaja about Sue

- 6**
- 0798 Waldvierterhof
- 0830 Detention Centre Vordernberg



Rylul Song was born in Taejon, Korea, and graduated from Hong-ik University Seoul and Technical University of Dortmund, Germany.

Christian Schweitzer was born in Linz, Austria, and graduated from Kaiserslautern University of Technology, Germany.

Both met during their master's degree studies at the Frankfurt Stuedelschule Academy of Fine Arts and established in 2000 their studio SUPA architects schweitzer song in Frankfurt, Germany. In 2005 they branched out to Seoul, Korea, teaching at Korea National University of Arts, Seoul National University and Korea University.

SUPA is working within the narrow intersection of conceptual design, art, theory and education. They are focused on the conceptual approach towards architectural design, finding new ways to expand the vocabulary of architecture. Their special interest lies in the exploration of the specific sociocultural context inherent in a task as the interface between everyday life, art and architecture to establish new means of communication.

At the same time with a researching area, called R.I.TA (Research and Innovation TAnk), they constantly explore all the possibilities of design and architecture. A special attention is reserved to the analysis of new shapes of the contemporary architectural language, by experimenting new designing visions and technologies, with a specific focus on environmental sustainability. The ongoing relationship between human beings and the natural environment or the urban context, are deeply investigated to explain impulses that drive people to inhabit a place. In 2016, TA.R.I Architects are selected at "100 Architect of the Year 2016 International Exhibition " hold in Seoul, South Korea, organized by Korean Institute of Architects and UIA (UNION INTERNATIONALE DES ARCHITECTES).

- 4**
- 0078 House P
- 0102 Renovation House RS
- 0198 EPS house
- 6**
- 0892 Renovation Community Center



TA.R.I-Architects was founded in 2015 in Rome, Italy, by three young architects graduated with honours at "Sapienza" University of Rome. The studio was born after important work experiences in different fields, and in a very short time obtained several awards and prizes. Arch. Marco Tanzilli and Arch. Claudia Ricciardi, the principal creative directors, had work experiences in some international architectural firms, and currently are professor assistants at University "Sapienza" of Rome. Arch. Matteo Tanzilli, instead, is the principal business developer of the firm, with previous experiences with important italian developers.

TA.R.I-Architects is a TAnk of Represented Ideas where to collect analysis and investigation of architecture on all scales, from urban masterplanning to furniture and art, responding to people needs and exploring structured, materials and experiences. Their architecture can be considered highly contextual, approaching to pre-existent buildings and surrounding elements in an revolutionary way. The multiple intervenets are part of a more complex strategy, that is able to take action giving back urban places to the community, showing the designing process as an added value.

At the same time with a researching area, called R.I.TA (Research and Innovation TAnk), they constantly explore all the possibilities of design and architecture. A special attention is reserved to the analysis of new shapes of the contemporary architectural language, by experimenting new designing visions and technologies, with a specific focus on environmental sustainability. The ongoing relationship between human beings and the natural environment or the urban context, are deeply investigated to explain impulses that drive people to inhabit a place. In 2016, TA.R.I Architects are selected at "100 Architect of the Year 2016 International Exhibition " hold in Seoul, South Korea, organized by Korean Institute of Architects and UIA (UNION INTERNATIONALE DES ARCHITECTES).

- 4**
- 0340 Varna Regional Library
- 6**
- 0912 Space Salim
- 0922 Centro Romano d'Arte Contemporanea
- 0980 Kaunas Science Island



"The provocation of the random and the unpredictable is our strategy in approaching the spatial and programmatic aspects of architecture. We work at discovering the factors leading beyond pure functionality – it is how we see the essence of architecture."

Marie-Therese Hamoncourt (*1967) and Ernst J. Fuchs (* 1963) graduated from at the University of Applied Arts Vienna. They founded the next ENTERprise Architects in 2000 in Vienna, Austria. From the beginning tNE have operated in a field that ranges from experimental installations to architectural practice, treating both approaches as equal and mutually influential. An explicitly experimental and exploratory approach and the close relationship between theory and practice, architecture and art are trademarks of the Vienna architectural office. The body and the city are key areas for research and sources of inspiration for the continuous development of an approach that understands architecture to be, above all, the adventure of the conquering of space. In keeping with this, the buildings, exhibition design and installations produced by tNE reject any predictable and clear functional logic. With their complex spatial dramaturgies, dramatic correspondence between interior and exterior, volume and void and a wealth of surprising details, the works of tNE are also invariably a self-confident expression of architecture as an autonomous cultural force.

- 5**
- 0612 Silent Conquest
- 0616 N[oe]kklus
- 0700 Catering Pavilion Cloud No.7
- 6**
- 0812 Museum of Military History



Toban Architects concentrate on finding out correlation between happiness and houses with a thesis of "How much happiness can people get from houses?", "In what kind of houses can people be happy?". It is getting worse to live in Korea as an apartment house is more common. People are living in standardized life because of merchandised apartment houses which are supplied more for value of properties less for residence. A large family in Korea that was an envy became a nuclear family, for the worse, single households is rated in almost 30% nowadays. House is not related with happiness of people anymore.

Toban Architects regards Han-Ok(Traditional Korean house) as a root of single-family house, and tries to turn Han-Ok to be a house of this era. We believe that people can be happy with three generations of family living together and with guests who can visit easily to our house. You will be happy to experience Han-Ok which only Korean enjoyed in, and indeed we hope Koreans to have happy life in a 'House'.

CEO in Toban Architects, architect Kim Jeong Gwan, keeps working on single-family house with the topic of 'How can a house make people happy?'.

'EEIPJAE' won a second prize in Busan architecture awards in 2010. Toban Architects is working on not only single-family houses but also a collective housing area, such as Jeju island 'Gacheonjae Village', actively. In addition, we are designing various buildings of schools and commercial facilities, including Busan Science High school, dormitory for Buil foreign language high school , Sungmo school for the blind, etc.

- 4**
- 0090 EE IP JAE



Our office is focused on exploring the fundamentals of architecture through contemporary epistemological and ontological speculation. What exists? How do groups of things exist and how are they related? How do we apprehend things, and where are the limits to our knowledge of the world? We specifically avoid scientism and its promotion of information and knowledge as viable sources or justifications for architecture. We prefer instead mystery and the ability of architecture to allure, vex, and resist consumption.

Our method is based on creating models, or specific three-dimensional entities that precede exposure to contingencies of program or site. They are not drawn forth from the world but rather exist as their own worlds; we use the term "models" both in terms of physically constructed entities, and in terms of ways of seeing the universe. Models that most fascinate us are low-resolution, almost ancient, figures such as jacks, crystals, and ziggurats, near-figures, objects inside objects, misfit objects, and loose-fit enclosures. The most fascinating models, and we would argue one of the most fundamental in architecture, are those that contend with the relation of container and contained.

Finally, our work attempts to move beyond generalizing building skin logics such as panelization towards specific figuration. Like tattoos on the body, figuration on building skins can simultaneously interact with underlying form, but also deviate from it, creating unexpected scale effects and links between architectural objects. Tectonics have for too long been identified with either material phenomenology on the one hand or material logics on the other. Both are wrong. The beauty of tectonics is when it lies or misbehaves, confounding expectations of material or scale.

- 4**
- 0048 Griffith Park House
- 0230 Domino Sugar Refinery
- 5**
- 0648 West Hollywood Belltower
- 6**
- 0736 Tectonic Fictions
- 0737 Walter P Moore Reception Desk
- 0954 Main Museum of Los Angeles Art



TOUCH Architect Co.,Ltd. was first established since 2014. It was changed from TOUCH STUDIO Architect partnership, with four years experiences into a company. With a great chance of an improvement, we have four main co-founder consist of Mr. Sethakarn Yangdem as an architect and leader of our firm, Ms. Parpis Leelaniramol, Mr. Kitti Amnuaysopon, and Mr. Kongkiat Poonlaphdecha, which will corporate together in design, construction, and management.

"TOUCH" comes from our philosophy that we respect your need and preference, and it is our desire to make your imagination becomes reality. So with a touch of ours, your idea will be delivered. We promise to fulfill your inspiration and make it happen, since we believe that architecture is not just a building. It is where we live, work, relax or even learn. We spend most of our lives in it. So, in time, it has become such a memorial to us. Also, it is one of the most fascinating aspects of human skills since the beginning of time. It indicates a timeline, as well as an expression of life, society, culture, and intellect. It is undeniable that architecture is a functional art which tells us many stories. Without architecture, there would be no buildings or art of any kind.

It is the architects who design and create architecture. Therefore, without architect, there would be no architecture.

- 5**
- 0362 I I I FAÇADE
- 6**
- 0782 The SHRINE