



U.S. Department of the Interior  
Bureau of Land Management



**PRE-SCOPING**

# Recreational Target Shooting – Washoe County Urban Interface





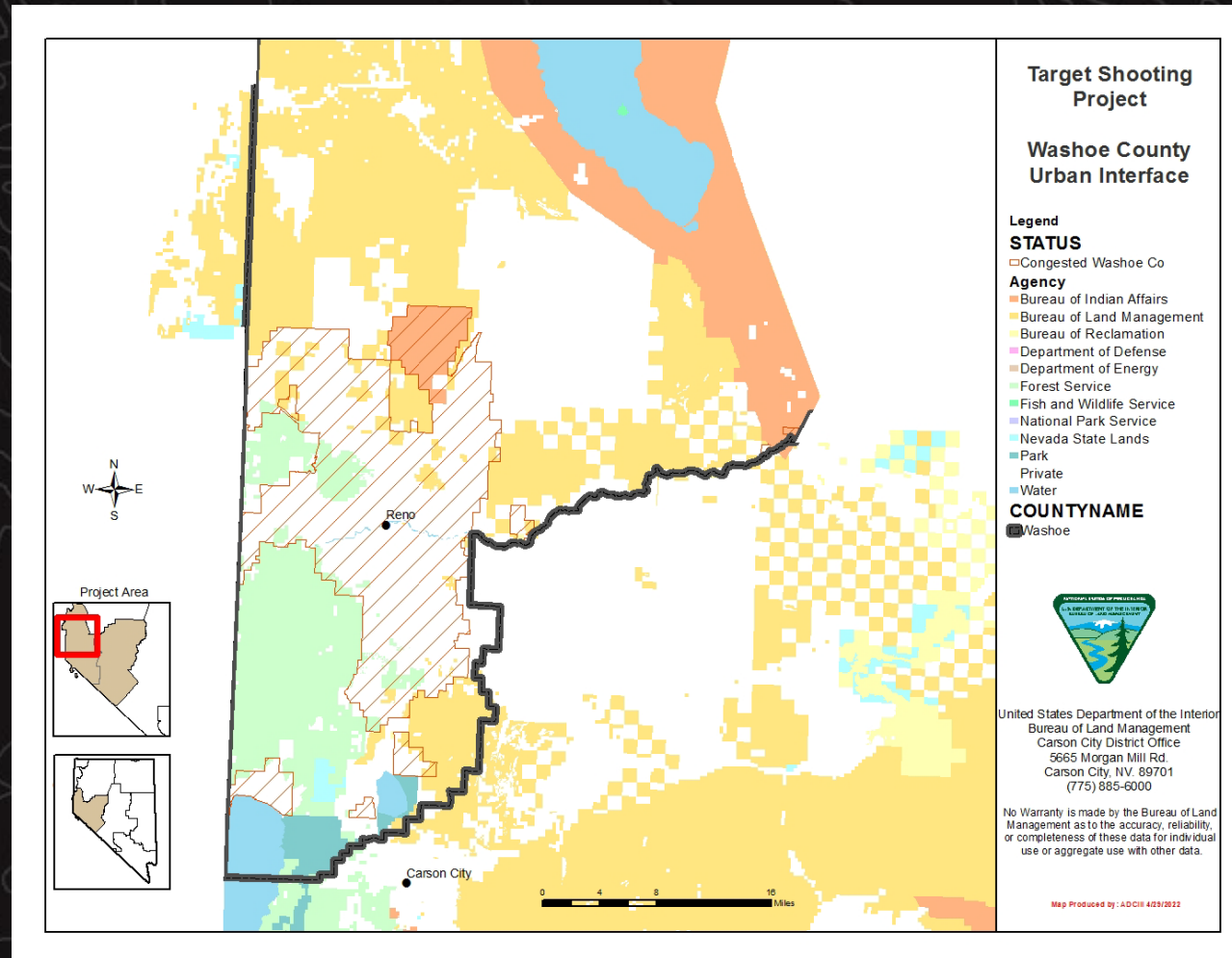
U.S. Department of the Interior  
Bureau of Land Management



PRE-SCOPING

# Recreational Target Shooting – Washoe County Urban Interface

DRAFT  
Project  
Area Map





## **PROJECT OBJECTIVES:**

- 1. Identify current recreational shooting use patterns on public lands within Washoe County.**
- 2. Determine if existing rules and regulations for recreational shooting on public lands in Washoe County are clear to public users.**
- 3. Determine if public users desire additional developed shooting ranges, and if so, determine who is best equipped to manage the ranges.**
- 4. Identify what resource, public health and safety, and wildfire concerns exist (i.e., trigger trash, shooting trees/rocks, shooting caused wildfires, shooting in unsafe manner).**
- 5. Identify interest in designating open shooting areas on public lands as well as funding mechanisms.**
- 6. Identify interest in volunteer opportunities (i.e., range masters, adopt-a-range, etc.) to help mitigate impacts to resources and public health and safety.**



# CORE ISSUES

## Protect Your Privilege

Garbage left behind by target shooters is a growing problem that is adding to the already overwhelming issue of illegal dumping on our public lands. Regardless of whether you brought it,

**If you shoot it, you own it!**

### HELP PROTECT YOUR PUBLIC LANDS:

- Clean up your targets, shell casing and trash
- Refrain from shooting glass, appliances, electronics or TVs
- Protect the landscape by not shooting trees or putting targets in trees
- Know where your bullets go, have a back stop, and do not shoot across or towards roads and trails.
- Respect other public land users and private property

**Your public lands are being trashed  
Be Part of the Solution  
Shoot Responsibly**



## Recreational Target Shooting on Public Lands



## CORE ISSUE # 1



**Trigger Trash**



**CORE ISSUE # 2**  
**Resource Degradation**



**CORE ISSUE # 3**

**Hazardous Materials**



## CORE ISSUE # 4 Fire Danger



### SHOOTING CAN CAUSE **WILDFIRES**



#### KNOW THE FACTS

- Fires caused by target shooting are increasing in frequency.
- Cheatgrass ignites at 660°F.
- Bullet fragments reach 1400°F.
- A bullet striking a hard surface will fragment and can ignite nearby vegetation.

#### DO YOUR PART

Don't shoot into rocks or metal objects and place targets in areas free of vegetation.



Always have water, a shovel and a fire extinguisher ready in case a fire starts.



Choose not to shoot on hot, dry and windy days.



Exploding targets, incendiary rounds and tracer ammunition are illegal on all public lands.



Clean up all your targets and shells when you're finished shooting and pack them out.



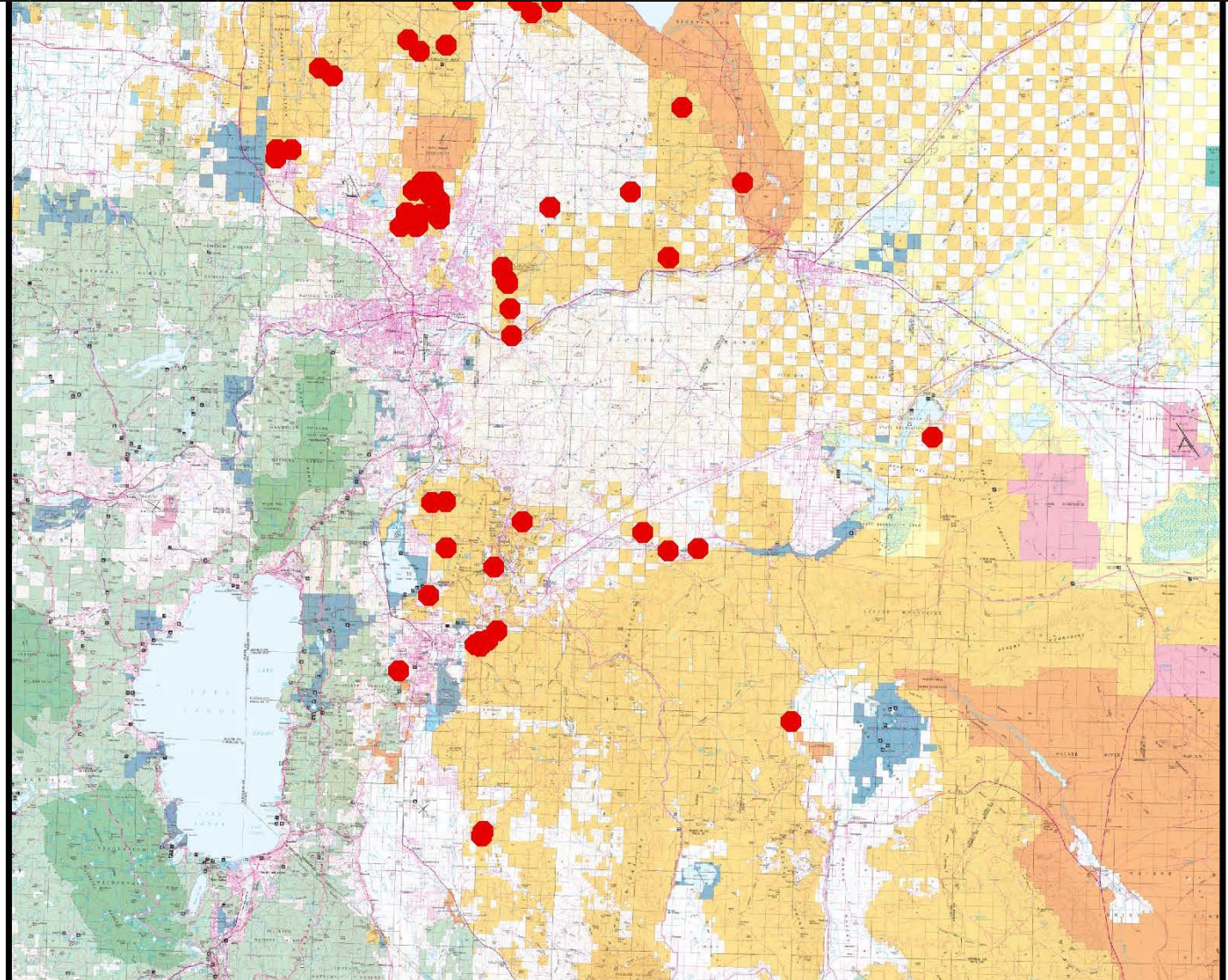
Learn more by checking out:  
<http://nevadafireinfo.blogspot.com>





# CORE ISSUE # 4

## Fire Danger





## RESPONSIBLE TARGET SHOOTING

Shooters: Respect Your Public Lands Access!

### SAFETY



Don't shoot on or across roads, waterways or trails.



Be sure of your target and beyond.



Safe and sound!



Always point your gun in a safe direction.



Treat every gun as if it was loaded.



Free trigger finger until ready.

### BACKSTOPS



Always have appropriate backdrop at least 15ft high & 25ft wide.



Trees, cactus, and other living objects are NOT BACKDROPS OR TARGETS.



Neither are Signs, kiosks, gates, & buildings.

### TARGETS

Some things aren't meant to be shot.



Sparks cause fires.



Clean up after yourself



### RESPECTED ACCESS IS OPEN ACCESS



Never shoot historical, archeological, or paleontological sites. They can never be replaced.



Call your local dispatch or land manager to report vandalism.



## CORE ISSUE # 5

### Public Safety





## **CORE ISSUE # 6**

### **Limited Number of Developed Ranges**



**Limited Access to Developed Ranges**



## **CORE ISSUE # 6**

### **Limited Number of Developed Ranges**



**Limited Access to Developed Ranges**



**CORE ISSUE # 7**  
**Non-compliance...**



**...and agency alignment with state,  
local, federal laws**



## CORE ISSUE # 7

**Non-compliance and agency alignment with state, local, federal laws.**



# KNOW YOUR AMMO

Because your public lands provide many opportunities for target shooting without designated ranges, **know you ammunition** to reduce the risk of wildfire.

### Steel Core/Jacket

- PROHIBITED seasonally on BLM-managed lands within the Carson City District to prevent wildfires (See Fire Prevention Order).
- **Military surplus ammo** often contains steel.
- Green or black painted tip in U.S. may indicate it has a steel tipped bullet or core. Some steel ammo may also have a deceptive copper wash on the jacket.
- **Test for steel using a strong magnet touched to the tip of the bullet. If it sticks, it has steel.**


### TEST AMMO HERE →

### Tracer and Incendiary

- Always prohibited on BLM managed lands in Nevada.
- Have painted tips. Watch for these colors: red, orange, blue, white, and yellow

Note: This is not a complete list or description of all ammunition. It is your responsibility to know what you are shooting. Lead ball or lead core with copper jacket ammunition has the least risk of starting a wildfire. However, take water, a shovel and a fire extinguisher and avoid shooting at metal and rocks. If a fire starts, call 9-1-1 immediately.

For more information call the BLM Carson City District Office at (775) 885-6000.





## **NEXT STEPS**

- **Target Shooting Opportunities Public Survey**
  - **Need Washoe County to provide info on how to get to the survey**
  - **Need Washoe County to provide dates the survey is open**
- **Project Design/Develop a Proposed Action**
- **Public Scoping**

**Question to the group: are we missing any next steps???**

**Or since this is pre-scoping...do we just leave it at scoping and if there are questions, we answer that our intention is to listen to the survey and scoping input and then continue from there, and we would be happy to come back and present at that time.**



U.S. Department of the Interior  
Bureau of Land Management



# PRE-SCOPING: Recreation Target Shooting – Washoe County Urban Interface

**Questions?**